



DELAWARE DEPARTMENT OF
**NATURAL RESOURCES AND
ENVIRONMENTAL CONTROL**



DELAWARE TAX DITCHES

BRITTANY HAYWOOD, PROGRAM MANAGER I, TAX DITCH PROGRAM

CONSERVATION PROGRAMS SECTION
DIVISION OF WATERSHED STEWARDSHIP

What is a Tax Ditch?





A Tax Ditch is...

- A governmental subdivision of the state
- A watershed-based organization formed by a prescribed legal process in Superior Court
- Made up of all landowners (also called taxables) of a particular watershed or sub-watershed



Tax Ditch Organizations

- Tax ditches are organized into **watersheds*** across the state
- Each watershed is run by a **tax ditch organization** which is comprised of the landowners that the tax ditch provides a service for in that watershed

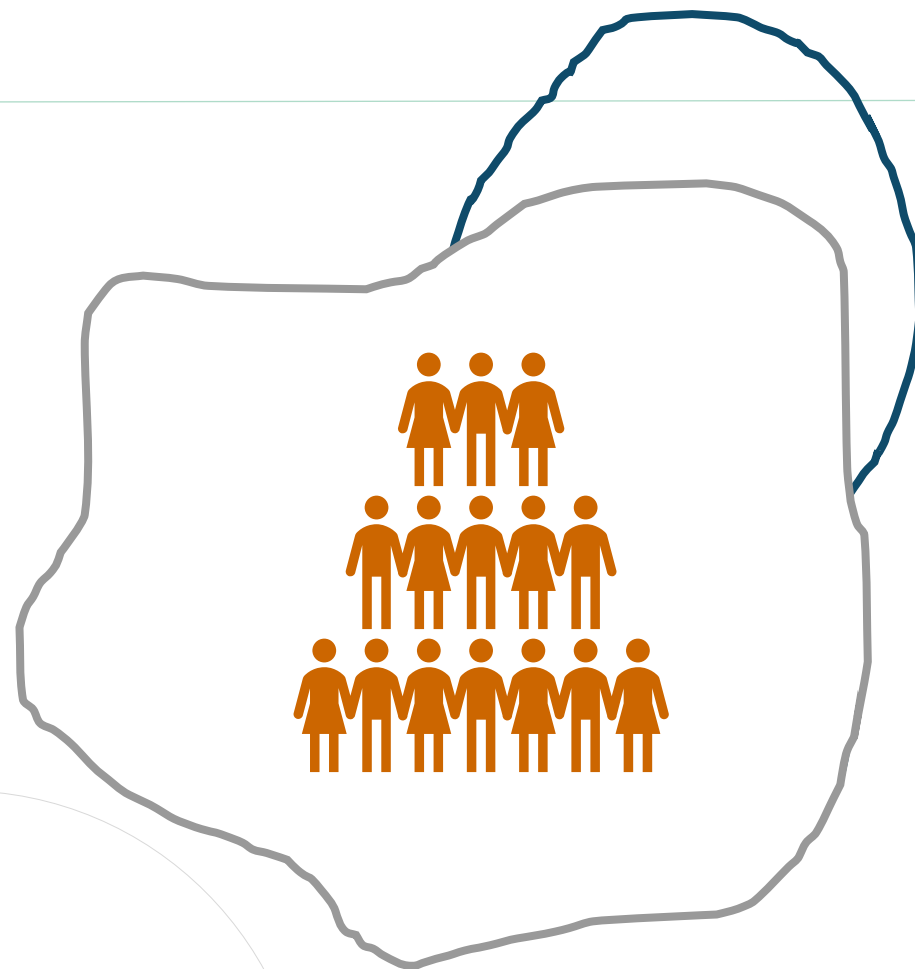
County	Number of Tax Ditches	Miles of Tax Ditch Channel
New Castle	26	57
Kent	78*	769
Sussex	137*	1,193
Totals	234 (7 are dual county*)	2,019

* A tax ditch watershed does not necessarily follow the natural watershed boundary



Tax Ditch Watersheds

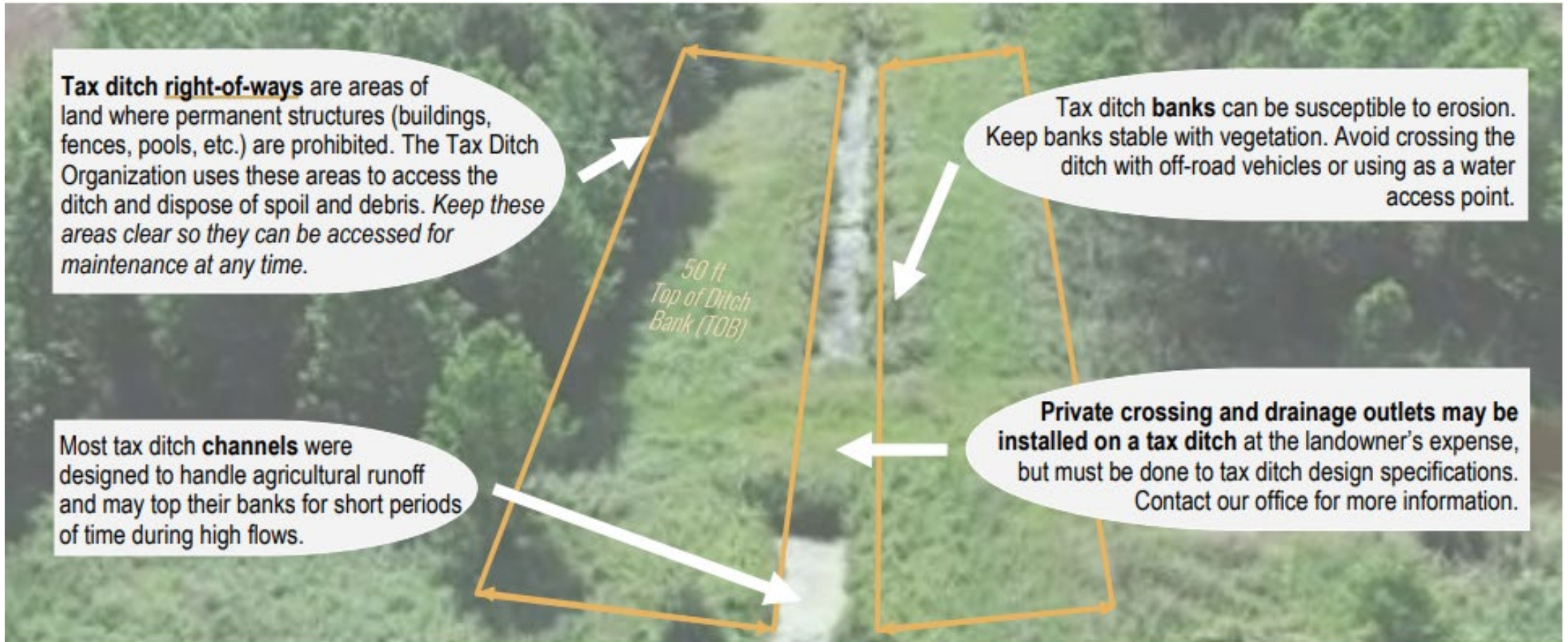
- Tax ditches are organized into **watersheds*** across the state
- Each watershed is run by a **tax ditch organization** which is comprised of the landowners that the tax ditch provides a service for in that watershed



* A tax ditch watershed does not necessarily follow the **natural watershed boundary**



Anatomy of a Tax Ditch





Who's Responsible for Maintaining the Ditch?

- The operations of a **tax ditch organization** are overseen by officers
 - **Chairman, ditch manager(s)** and a **secretary-treasurer**
- These officers are landowners within the watershed and are elected at an annual meeting by the landowners (also called taxables)
- The **tax ditch organizations** determine their own maintenance needs and the course of action based off the funds they have received from their ditch taxes



Who Pays the Tax?

- Landowner in a watershed that receive a benefit from the tax ditch may be charged a yearly tax that goes to maintenance of the tax ditch
- Cost-share or matching programs are also made available through the conservation districts to support maintenance activities



Agencies Assisting Tax Ditches Day-to-Day

- DNREC Drainage Program – Tax Ditch Program
- Kent Conservation District
- New Castle Conservation District
- Sussex Conservation District





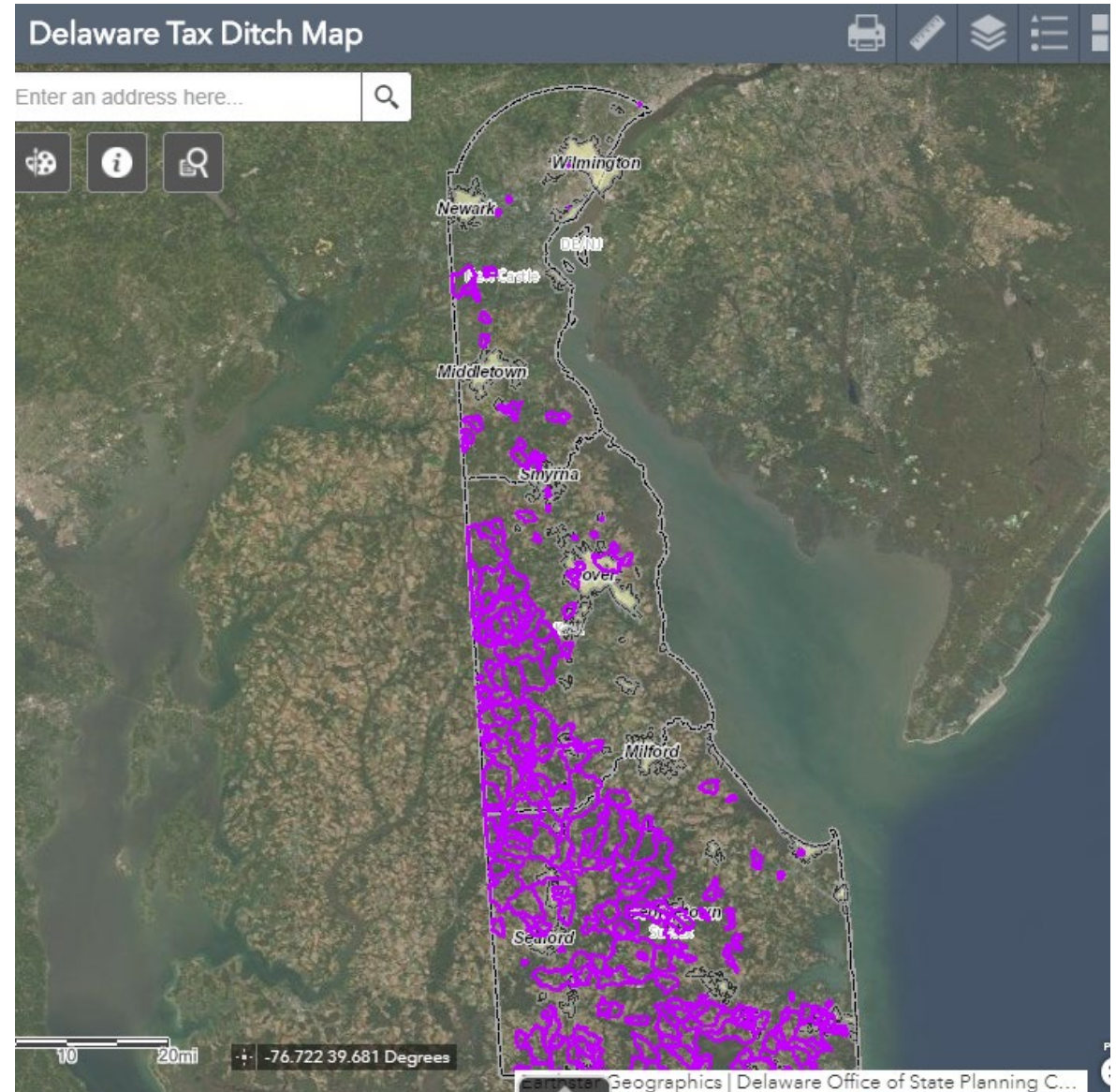
DNREC's Tax Ditch Program

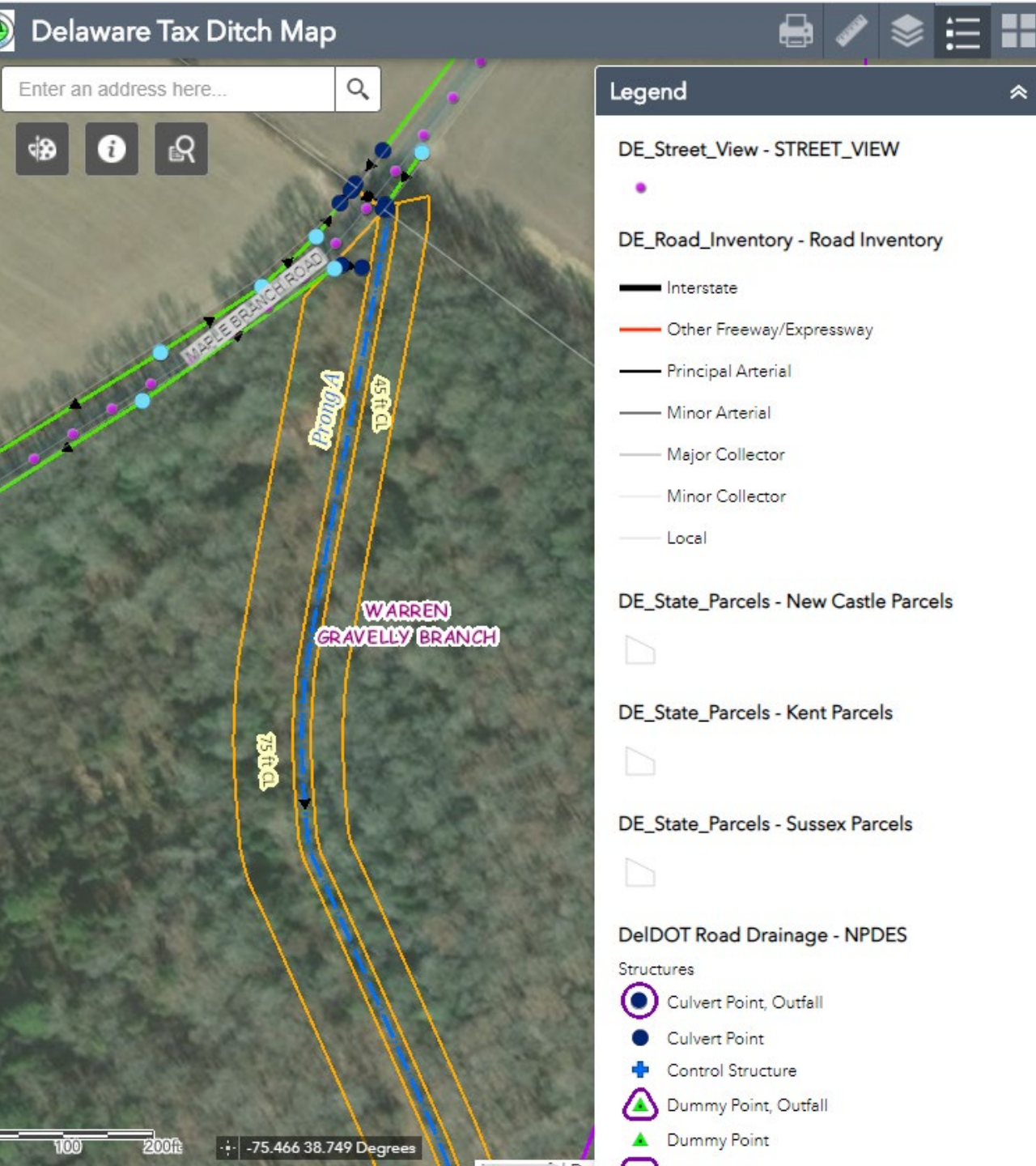
Melissa Hubert
(Program Manager II)
Brittany Haywood
(Program Manager I)

- Operates under the roles and responsibilities assigned in the **Delaware Code under Title 7 Chapter 41 “Agricultural and Soil Conservation; Drainage and Reclamation of Lowlands”**
- Responsibilities of Program:
 - Administrative and technical assistance for tax ditch organizations
 - Court Order Changes
 - Repository for tax ditch systems and information
 - Administer funds to the Conservation Districts to provide financial assistance for tax ditch maintenance
 - Assist with maintenance and inspection of tax ditch systems

Tax Ditch Mapper

- de.gov/taxditchmap
- Use to locate tax ditches, watersheds, right of ways and more
- Map layer is also available on FirstMap to download



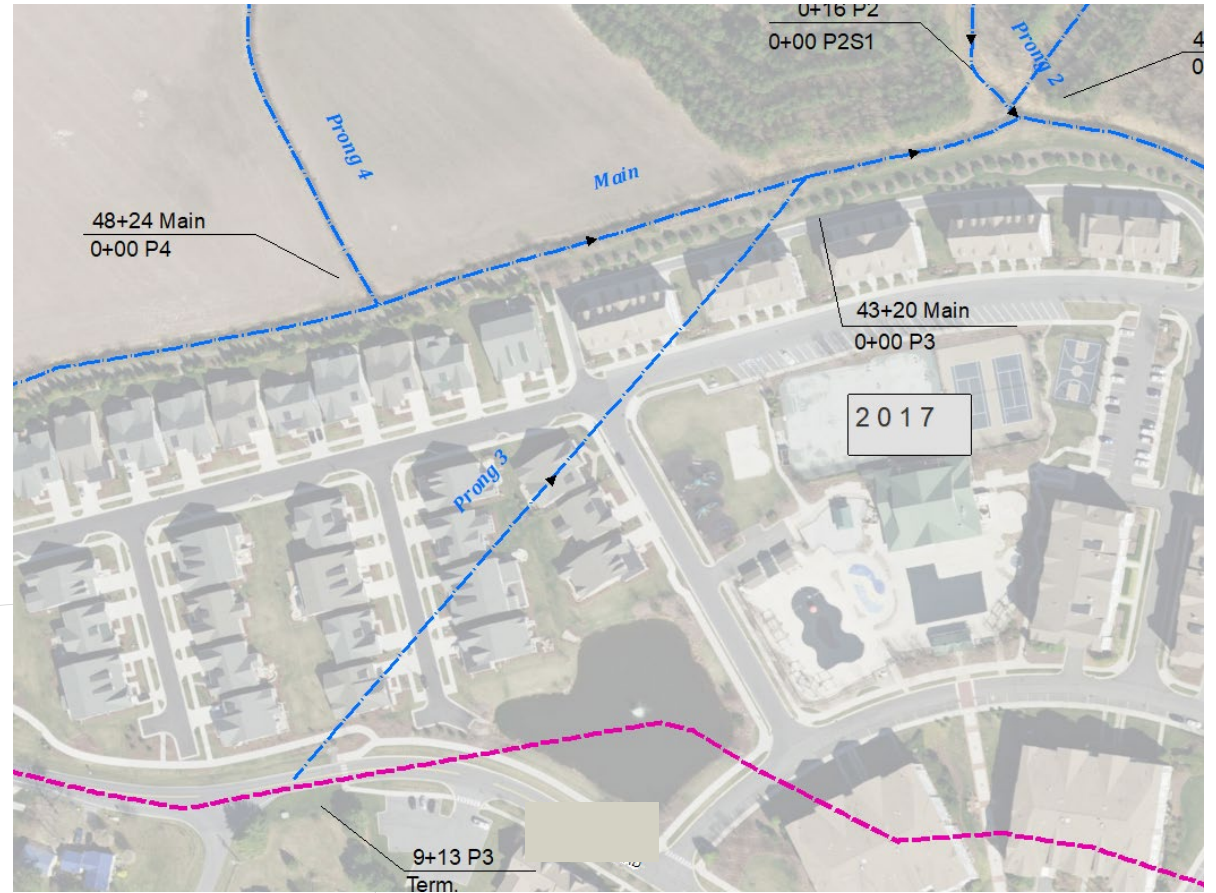
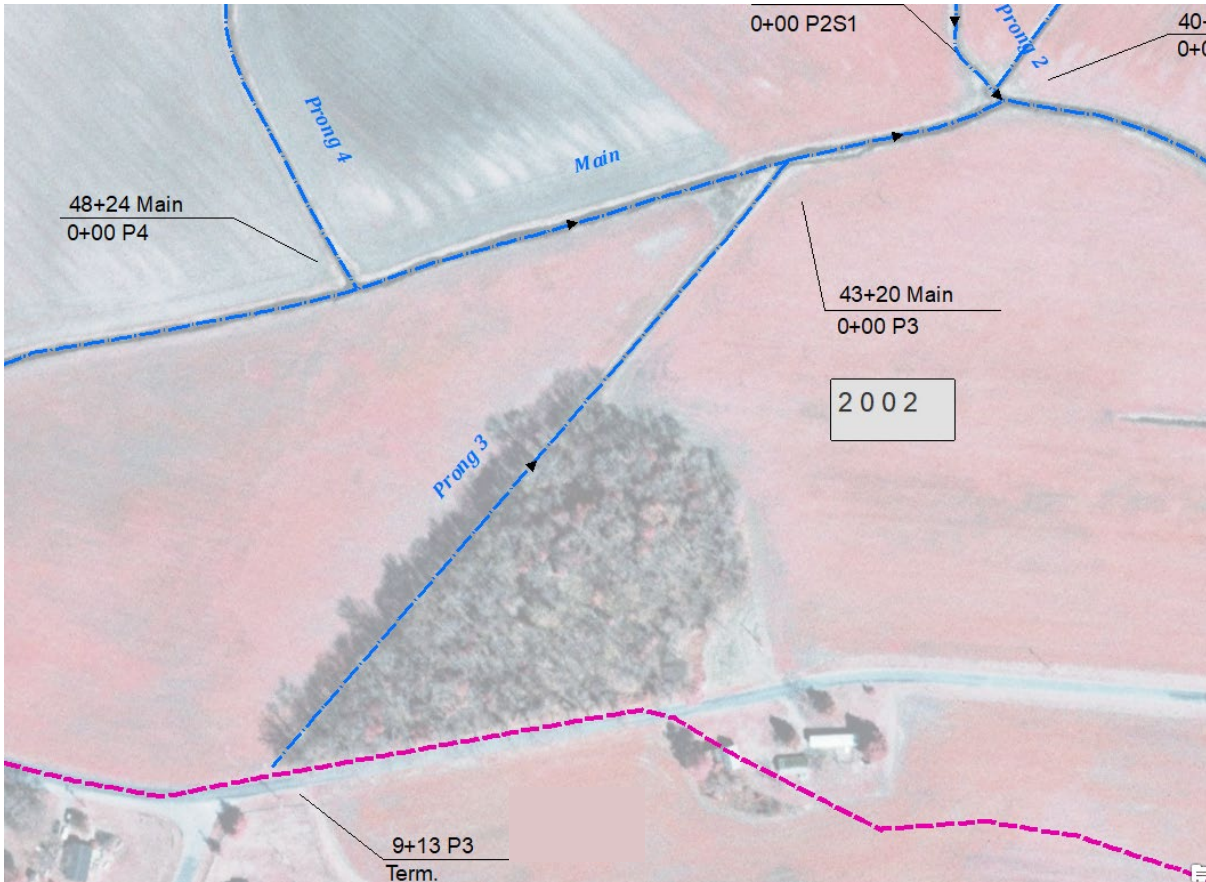


Terminology to Know

- ROW – right-of-way
- COC – court order change
- TOB – top of ditch bank
- CL – centerline of ditch or pipe
- SAR – special access right of way



Court Order Changes are Necessary Because..



The background image shows a rural landscape. In the foreground, there is a grassy bank next to a body of water, possibly a ditch or a small stream. The water is calm and reflects the sky. In the middle ground, there are several wooden posts or stakes driven into the ground, possibly for a fence or a project. In the background, there are several houses, including a prominent light blue one, and some trees. The overall scene is somewhat hazy or misty.

Public Ditch/ Resource Conservation & Development Projects (RC&D) Program

8 Sussex County Highlight



Public Ditch/ RC&D Program



- Coordination with Conservation Districts for drainage projects to:
 - Enhance the health of communities by improving watershed and drainage issues statewide
- Manages drainage concerns, project development, contract development and oversight, landowner permissions
- Works on smaller drainage projects

Drainage Assistance Line Reporting


- 302-855-1955
- DNREC_Drainage@delaware.gov
- de.gov/taxditch

DNREC HANDLES CONCERNS FOR
KENT AND SUSSEX COUNTIES



NCCDC HANDLES CONCERNS FOR NEW
CASTLE COUNTY




DIVISIONS ▾ABOUT DNREC ▾ADMIN. LAW ▾NEWSROOMCONTACT US




Drainage Concern Reporting Form

 Listen 

Watershed Stewardship

Home 

Contact Us 

Beaches ▸

Waterways ▸

Wetlands ▸

Water Quality ▸

Sediment / Stormwater ▸

Drainage & Flooding ▸

Conservation Programs ▸

You can get advice or technical assistance with drainage issues on your property. The first step is reporting the issue, using the form below.

What is your name?

How can we contact you?

Your Name

Phone Number

Email address

What issue are you reporting?

If you chose "other," please explain.

Choose the option that best describes the is ▾

Where is the property with the drainage concern?

Street Address

City

DE

ZIP Code

County

County Tax Parcel Number

Please briefly describe the drainage problem.

Where is the drainage concern on the property?

Can you share a photo of the problem?

Choose File

No file chosen



THANK YOU!

- **DNREC Drainage Program:**
- 302-855-1930
- **Tax Ditch Program – de.gov/taxditch**
- Melissa Hubert- Melissa.Hubert@delaware.gov
- Brittany Haywood- Brittany.Haywood@delaware.gov
- **Public Drainage Program**
- Tyler Brown- Tyler.Brown@delaware.gov