

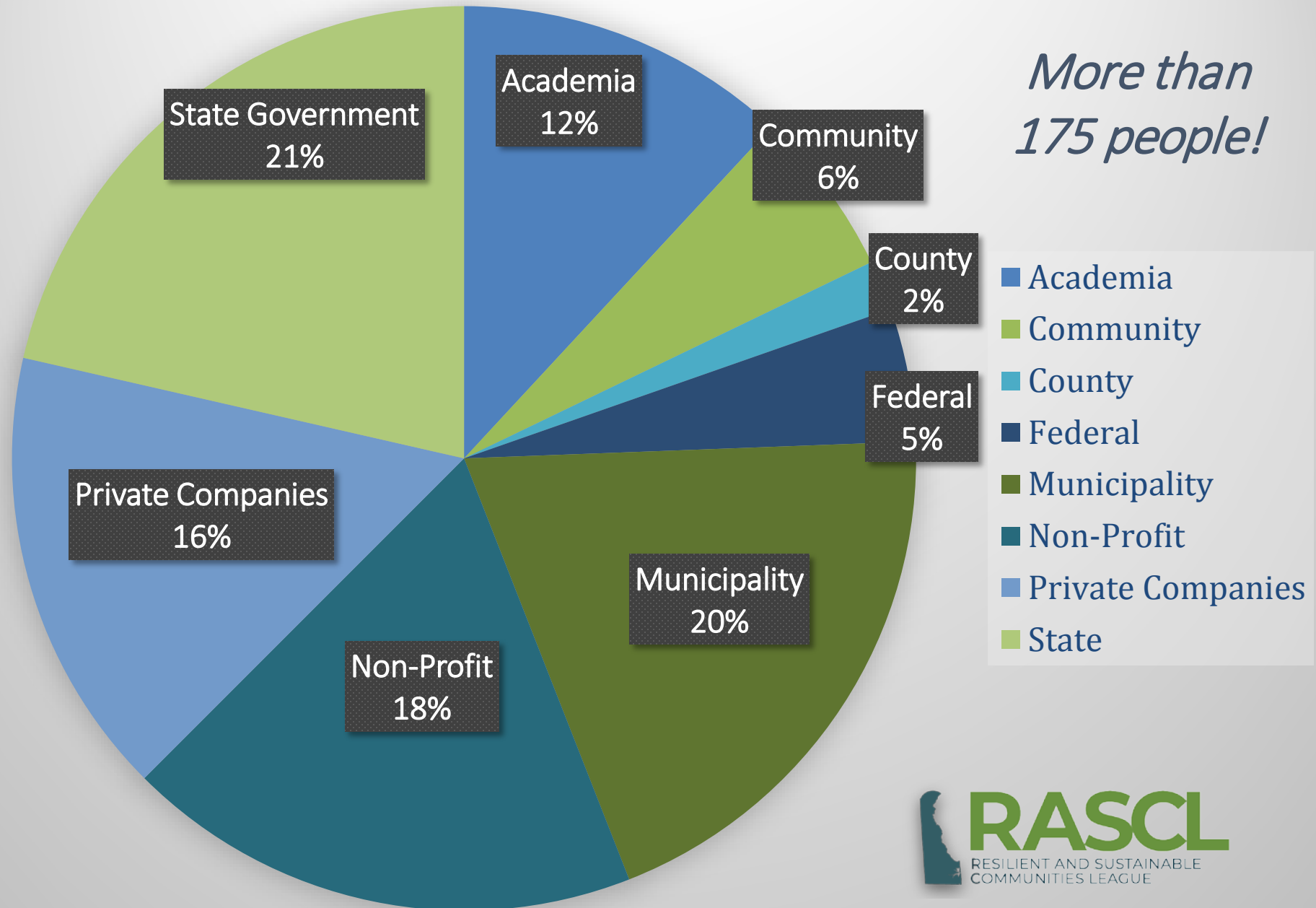


Welcome To the Second Annual RASCL Summit

December 5, 2018



2018 RASCL Summit Attendees



Who is RASCL?

RASCL is a collaborative network made up of partners working to promote resilience and sustainability in communities across the State of Delaware. Our partners include:

- Center for the Inland Bays
- Delaware Dept. of Natural Resources and Environmental Control (DNREC)
- Delaware Dept. of Transportation (DelDOT)
- Delaware Emergency Management Agency (DEMA)
- Delaware Center for Environmental Monitoring and Analysis (CEMA)
- Delaware Forest Service
- Delaware Geological Survey
- Delaware League of Local Governments
- Delaware Sea Grant
- Office of State Planning Coordination
- Partnership for the Delaware Estuary
- The Nature Conservancy Delaware
- University of Delaware Coastal Resilience Design Studio
- University of Delaware Institute for Public Administration (UD IPA)



Who does RASCL serve?

RASCL provides information, technical assistance, and networking opportunities to state, local, and county governments, citizen groups, the private sector, and non-profit organizations in order to advance the goals of resilience and sustainability in the State of Delaware.



What does RASCL do?

RASCL partners work together on a variety of projects and initiatives, including:

- Coordinating programs and initiatives
- Use RASCL partner resources and expertise to provide technical assistance to communities
- Host an annual RASCL Summit, which brings diverse sectors together to network, learn, and share
- Organize RASCL Coffee Hours in each county to address hot topics and encourage dialogue between communities and resilience practitioners



RASCL's accomplishments in 2018



- Held RASCL Coffee Hours in each county & outreach events to address hot topics and encourage dialogue between communities & practitioners
- Quarterly Partners Meetings
- New Logo
- New Administrative partner- The Partnership for the Delaware Estuary
- New Website – www.derascl.org
- 2018 Summit – *The Buck Stops Here*



September Coffee Hour in Sussex County



University of Delaware Coast Day

Thank You To Our 2018 Sponsors

Supporter Level



Friend Level



Inland Bays
Foundation

Fan Level

- CNC Solar
- KCI Technologies
- Pinelands Nursery
- University of Maryland
Environmental Finance
Center



Now, Please Welcome:

DEMA Director A.J. Schall, Jr.





DELAWARE'S ALL-HAZARD MITIGATION PLAN

A.J. Schall, Director
Delaware Emergency Management Agency



12/10/2018



WHY MITIGATE

Community Hazard/Flooding Photos – Inland Community Flooding



Milton, Delaware (Sussex County)

Northeaster – March 6-8, 1962



WHY MITIGATE

Community Hazard/Flooding Photos – Inland Community Flooding



Photo courtesy Delaware Geological Survey

Glenville Park (New Castle County), Delaware

Adjacent to Red Clay Creek



WHY MITIGATE

Community Hazard/Flooding Photos – Inland Community Flooding



Photo courtesy Delaware DNREC

Stanton, Delaware

Tropical Storm Henri – September 2003



WHY MITIGATE

Community Hazard/Flooding Photos – Inland Community Flooding



Milford, Delaware

Northeaster – May 12, 2008

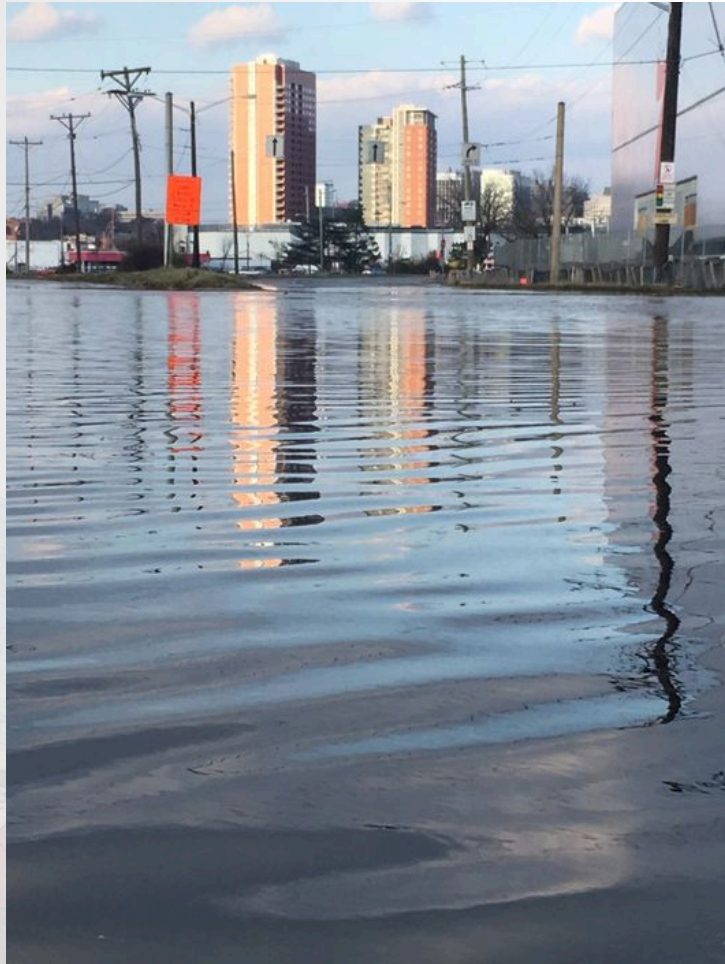


WHY MITIGATE





DOES IT TAKE A MAJOR STORM



TNJ 11/25/18

Verizon LTE 9:41 AM 100%

[DEMA](#) **Inbox** [Edit](#)

FEMA Region III AM Daily Situation Report 11/2...
Significant Events: • Spot Report 18-210 (CIR# 19): Severe Weather in Region III (Update 1 & 2...

● **TMC1** 5:21 AM >
★ NC * FLOODING * RT 9 / RIVER RD IS CLOSED...
 AREA 10 CLOSED STANT Real Time Delaware
Travel Information is available at: Map based: h...

★ **TMC1** Yesterday >
 NC * FLOODING * OGLETOWN RD EB AND WB...
AREA 10 STANT Real Time Delaware Travel
Information is available at: Map based: http://m...

● **TMC1** Yesterday >
★ NC * FLOODING * GOVERNOR PRINTZ BLVD I...
 AREA 12 IS ON SCENE TRYING TO CLEAR
CLOGGED DRAINS STANT Real Time Delaware...

● **info@pdc.org** Yesterday >
New Alert: Tsunami (US ATL/Gulf Coast/CAN)...
PDC Hazard Notification [https://
emops.pdc.org/infoserv/das/api/v2/images/ico...

● **TMC1** Yesterday >
★ NCC / FLOODING / RT 40 WB CLOSED AT RT 1...
 Area 10 on scene. Traffic is being detoured to Rt
13 SB. Ken Real Time Delaware Travel Informati...

Updated Just Now
8 Unread



Why Mitigate?

- For every \$1 spent on hazard mitigation, \$6 in future disaster costs are saved
 - “Natural Hazard Mitigation Saves: 2017 Interim Report” - National Institute of Building Sciences
- Study analyzed 23 years of federally funded mitigation grants provided by FEMA, US EDA, and HUD





GOALS OF MITIGATION PLANNING

- Provide a strategy for federal, State, and local partners to work together within Delaware
- To strategically make the State more resilient by utilizing all possible resources in a coordinated manner
- Ensure all partners have a comprehensive understanding of risk and vulnerability
- Allows the State of Delaware to access federal mitigation grant funding
 - *Pre-Disaster Mitigation*
 - *Flood Mitigation Assistance*
 - *Hazard Mitigation Grant Program*



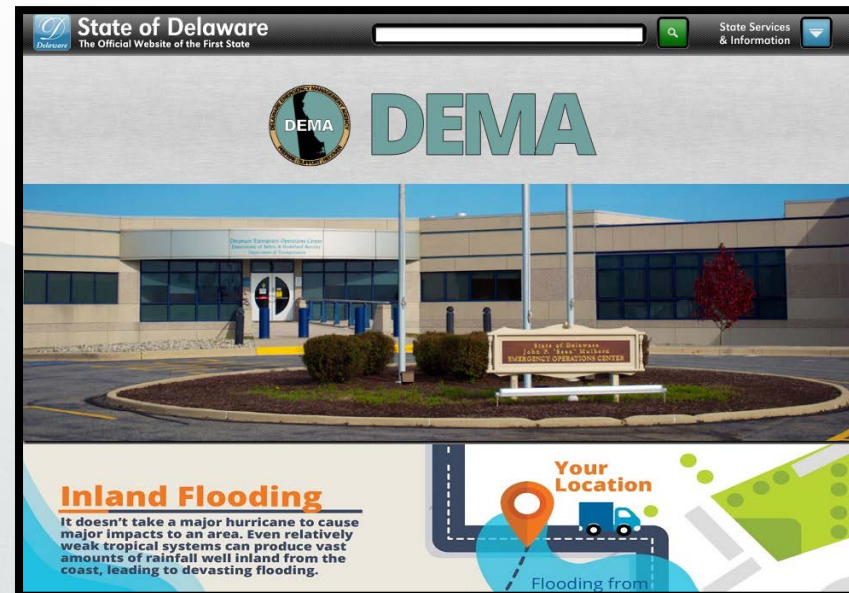
A TRUE WHOLE COMMUNITY PROCESS

- DNREC
- DeIDOT
- Department of Health and Social Services
- Department of Agriculture
- Department of Education
- Department of Insurance
- Department of State
- Delaware National Guard
- Delaware River and Bay Authority
- Delaware State Housing Authority
- Delaware State Fire School
- Governor's Office
- University of Delaware
- Delaware Geological Survey
- New Castle County
- Kent County
- Sussex County
- City of Wilmington
- American Red Cross
- U.S. Army Corps of Engineers
- American Society of Industrial Security
- Public Comment



PUBLIC INVOLVEMENT

- Crucial to the success of any plan
- Plan was posted publicly online and distributed to libraries for a period of public comment
- Plan is available online at www.dema.Delaware.gov

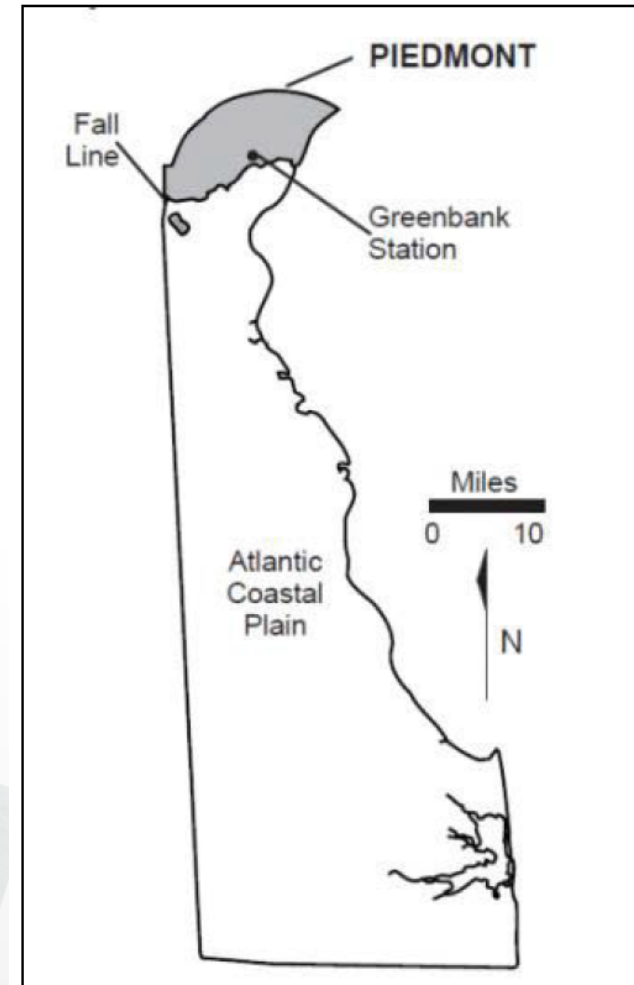




PLAN SECTIONS

• Community Profile

- Geography and environment
 - History
 - Natural resources
 - Coasts, rivers, bays, lakes, ponds
 - Climate
 - Wildlife, plants and soils
- Population and demographics
- Infrastructure and land use
 - Natural and man made infrastructure
 - Cities
 - Agriculture
- Employment and industry
- Past disasters





PLAN SECTIONS

- **Hazard Identification** (in order)

- Natural

- **Coastal Flooding**

- DE has observed twice the amount of global mean sea level rise

- **Nor'easters**

- **Hurricanes**

- Winter Precipitation
- Coastal Erosion
- Inland Flooding
- Severe Thunderstorms
- Extreme Heat
- Extreme Cold
- Tornadoes
- Dam/Levee Failure
- Drought
- Wildfire
- Earthquakes, landslides, & sinkholes
- Tsunamis

- Human-caused/Technological

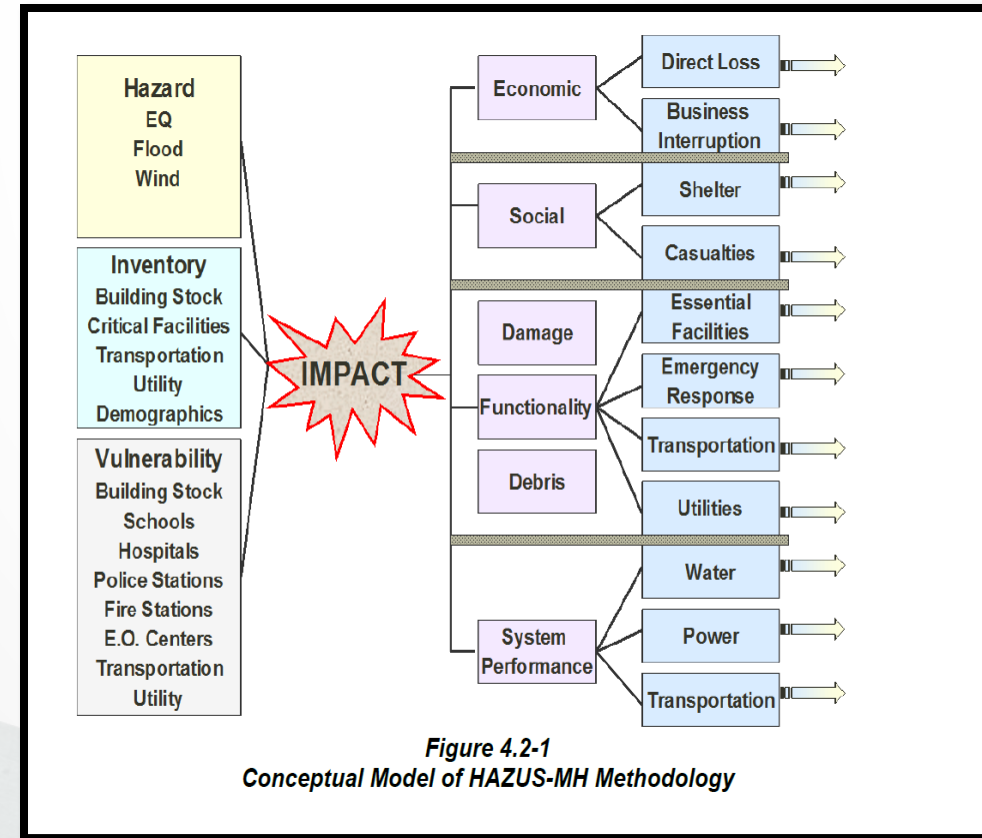
- Public Health Incidents
 - Animal/Crop/Plant disease
 - Human Disease
 - Pandemic Human Disease
 - Mass Casualty
- Terrorism
- Hazardous Materials
- Transportation/Infrastructure Incidents
- Other

Each category was analyzed by county:

- number of occurrences
- duration of event
- occurrence
- economic impact
- associated death/injury

PLAN SECTIONS

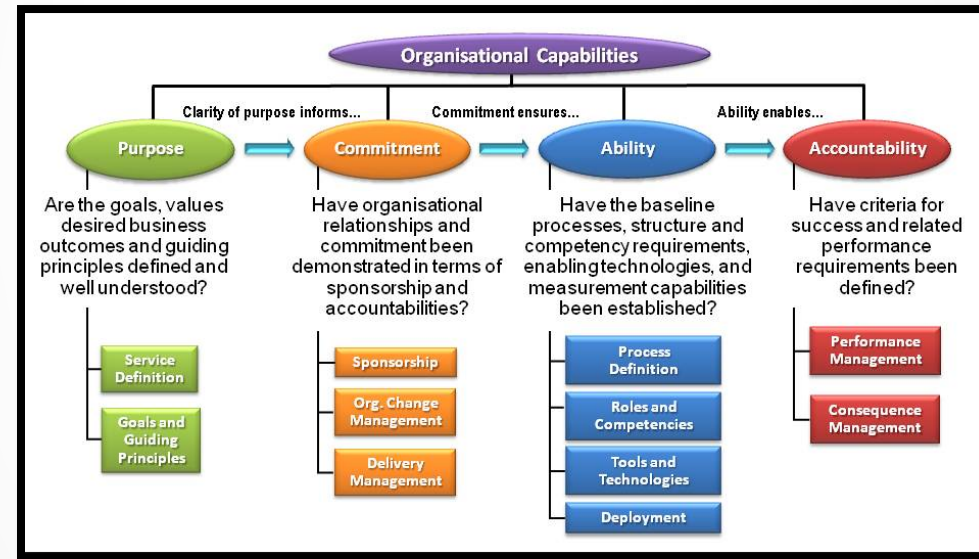
- **Vulnerability Assessment**
 - Explored at the local level
 - Population Density
 - Building Exposure
 - Poverty and income levels
 - Age distribution
 - Property values
 - Structure types
 - Development trends
 - Critical Infrastructure location
 - Access to social services
 - Areas of repetitive loss



PLAN SECTIONS

• Capability Assessment

- State mitigation capability
 - Plans, programs, policies, funding
 - By agency and by hazard
- Administrative capability
- Technical capability
- Fiscal capability
- Legal capability
- Political willpower



Local mitigation capability

Plans and programs

By County and incorporated town

- National Flood Insurance Program (NFIP) coverage
- Community Rating Scale participation (effective floodplain management policies)



PLAN SECTIONS

- Community Profile
- Hazard Identification (in order)
 - Natural
 - **Coastal Flooding**
 - DE has observed twice the amount of global mean sea level rise
 - **Nor'easters**
 - **Hurricanes**
- Vulnerability Assessment
- Capability Assessment
- Mitigation Strategy



PLAN SECTIONS

- Mitigation Strategy
 - **Goals**
 - Framework for actions
 - Ex: "Implement a robust mitigation program that addresses way to mitigation the loss of life from disaster events"
 - **Objectives**
 - Strategy to implement goals
 - Ex: "Strengthen cooperation with DEMA's mitigation partners and help educate them about mitigation"
 - **Actions**
 - Make the plan functional
 - Achievable actions that are implemented by Mitigation Council
 - Ex: "[...]Host semi-annual meetings of the SHMC. "
 - Tracked in the plan by DEMA
 - Lead agency
 - Cost
 - Schedule



Projects throughout Delaware

Recently Completed Projects

- Home elevation in Fenwick Island
- Acquisition in Ardentown

In Progress

- UD Marine Operations Building Floodproofing
- DelDOT Flood Sensor Installation
- Acquisition in New Castle County

Upcoming

- Wetlands restoration project
- Generators to critical facilities
- Acquisitions and elevations



TAKEAWAYS

- Make sure your town has adopted your county's approved mitigation plan to access mitigation funding!
 - Work with your town and county to get projects started
- **It pays to invest in mitigation**
 - \$1 spent is \$6 saved
- Mitigation is a team sport
 - Everyone has a responsibility to participate if we want to increase resiliency in a lasting way
- Partnerships are crucial to success
 - It takes everything discussed and more
- Land management is a must!

Questions?

**Director A.J. Schall, Jr. – Department of
Emergency Management**

